

Using Tablet as a Second Monitor

REQUIREMENTS

- PC (Windows) as the primary computer
- Android tablet or iPad as a secondary device
- spacedesk installed on both primary and secondary devices (It's free!!)
- Both devices must be connected to the same wireless network
- Stylus (optional)

Note: If your primary device is a Mac, spacedesk will not work. All other multiple monitor applications that work with Mac like iDisplay and Duet Display cost between \$10- \$20. Your best option might be to log-in on Zoom with both devices (Mac and tab/iPad). [Check here for instructions on how to do it.](#)

INSTRUCTIONS

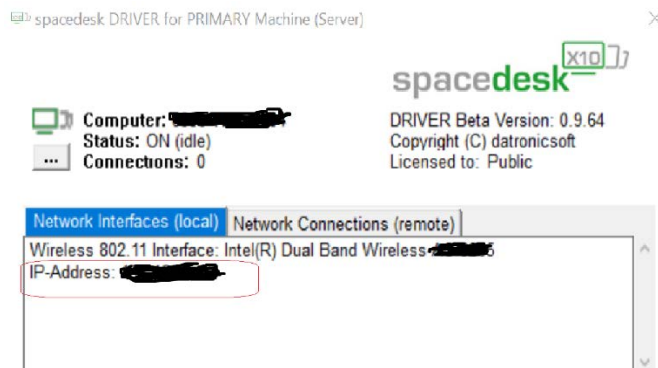
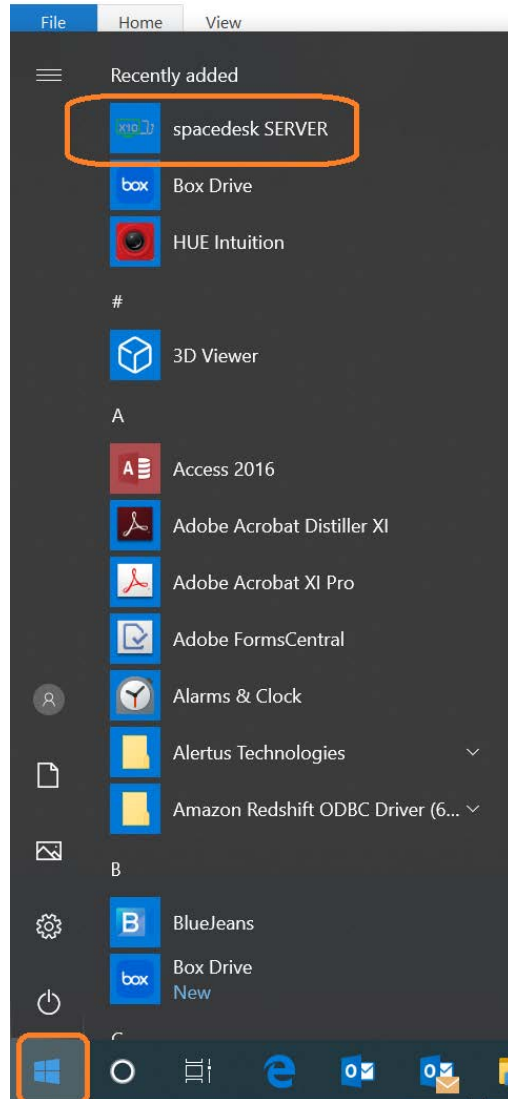
- 1. Install spacedesk server on your PC:** Go to www.spacedesk.net , click on **download** navigation tab and select the appropriate version for your computer. Download the server on your PC.

The screenshot shows a web browser window with the URL spacedesk.net/#box_434. The navigation menu includes 'DISPLAY DRIVER SOFTWARE', 'DOCUMENTATION', 'SUPPORT', and 'DOWNLOAD'. The 'DOWNLOAD' button is highlighted with a red box. Below the navigation bar, the page is titled 'SPACEDESK DRIVER SOFTWARE FOR WINDOWS PRIMARY PC (SERVER)'. It lists four options for download:

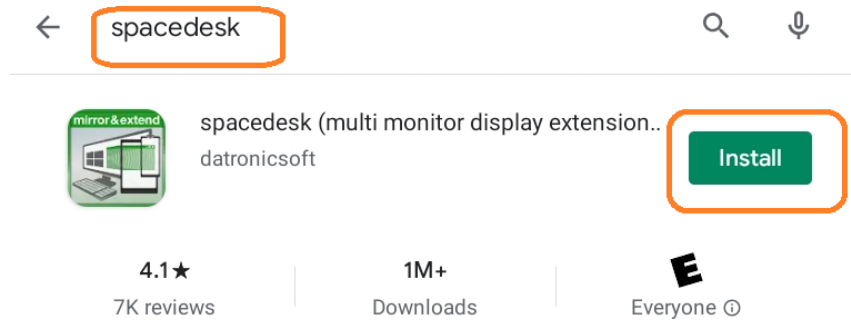
Operating System	MSI Version
Windows 10 (64-bit)	0.9.64
Windows 10 (32-bit)	0.9.64
Windows 8.1 (64-bit)	0.9.43
Windows 8.1 (32-bit)	0.9.43

Current version: Beta III v0.9.64

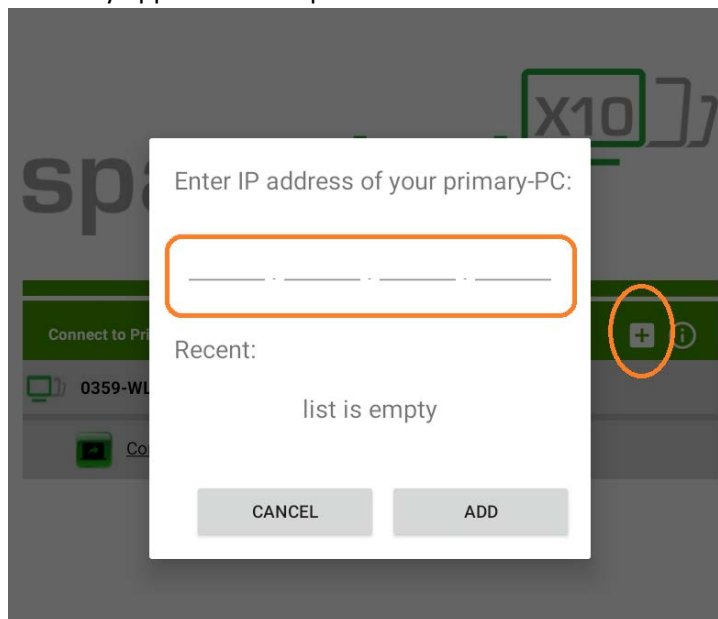
- 2. Note down the IP address of your primary computer:** Go to spacedesk server on your computer, your IP address will be available under **Network Interfaces Local**.



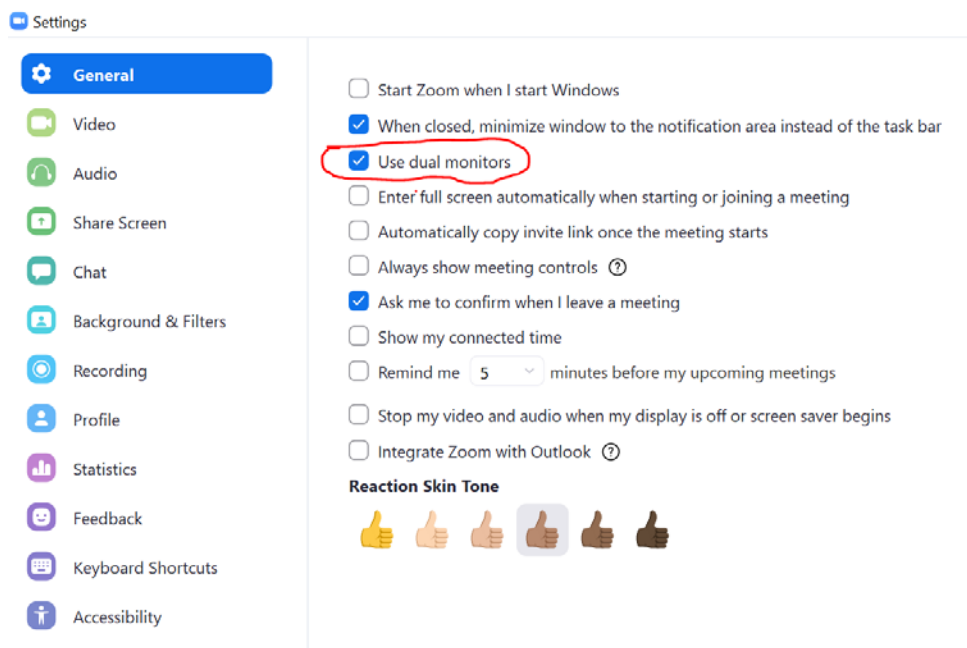
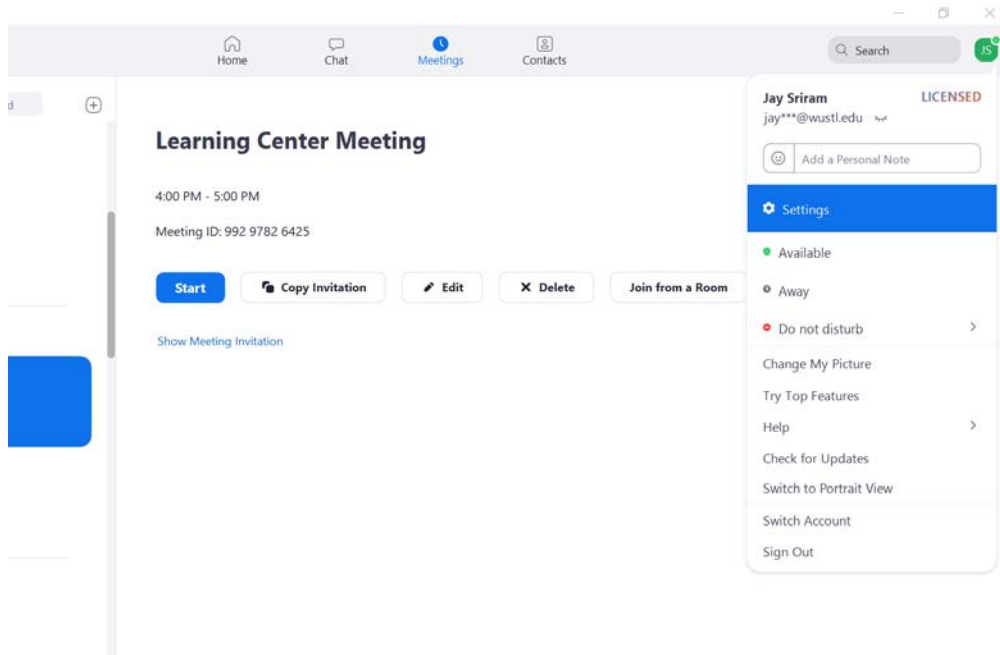
3. **Install spacedesk app on your tablet:** Go to Google Play and download spacedesk app. Make sure tablet is connected to the same wireless network as the Primary computer.



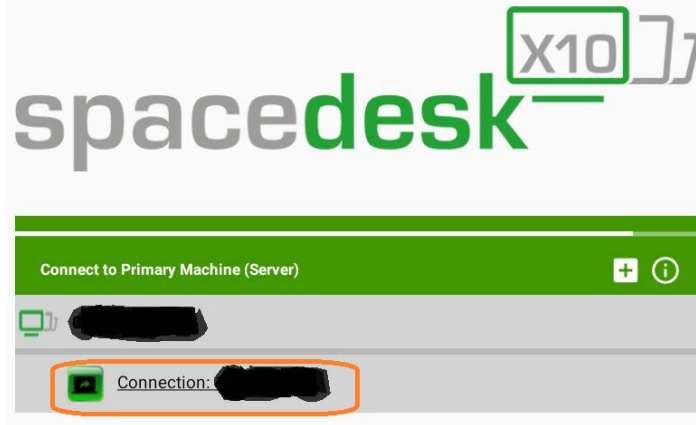
4. **Add IP address of Primary PC to tablet:** Open spacedesk on your tablet, click on the + sign, add your IP address of your Primary computer and select **add**. Sometimes your primary PC and it's IP address automatically appears as an option.



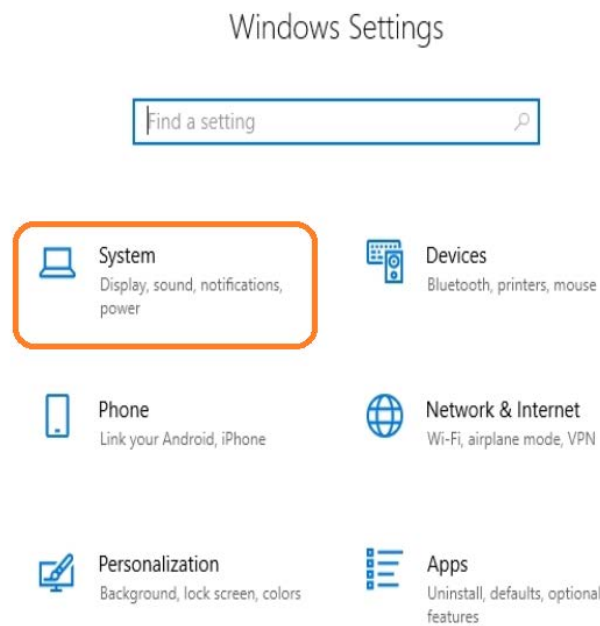
5. **Make sure Dual Monitors is selected on Zoom:** Go to Zoom Desktop app. Click on your profile pic/initials on the top right corner of the page and select settings. Selct **Use Dual Monitors**.

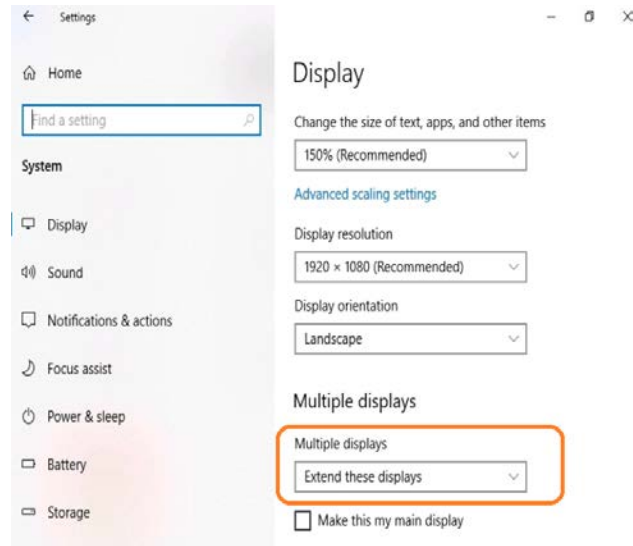


6. **Connect tablet to Primary computer through spacedesk:** When you are ready to start your Zoom meeting, go to **spacedesk** on your tablet and connect to the primary computer by clicking on **Connection: IP address**. Your tablet is now an extended display of your primary computer.



7. Start your Zoom meeting
8. **Check if multiple display is set to extended display on your Primary computer: Go to Windows Settings, System and set Multiple Displays to Extend these displays.**





9. **Write and share your work:** Share whiteboard from tablet while gallery view of your participants is on your primary computer.
10. **Disconnect tablet from dual display:** When you want to disconnect tablet from dual display, gently slide up the screen to see the menu options. Click on the **left arrow head** and click **OK** to leave display.

