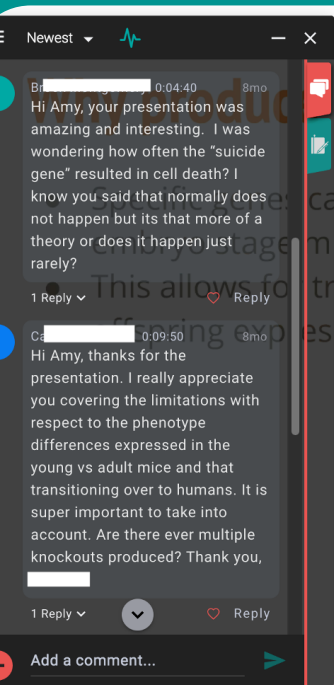
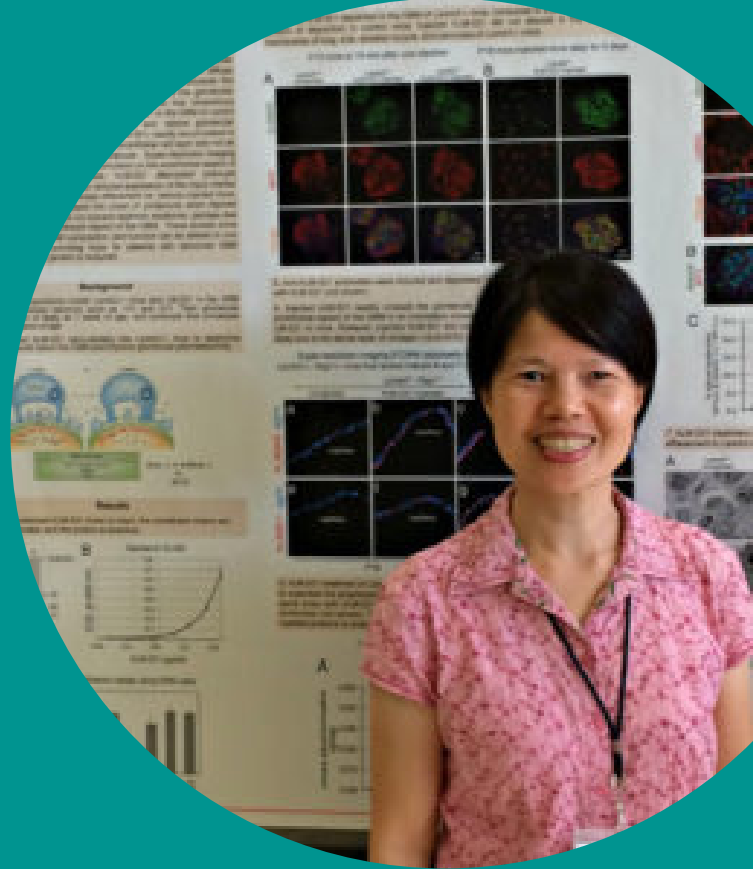
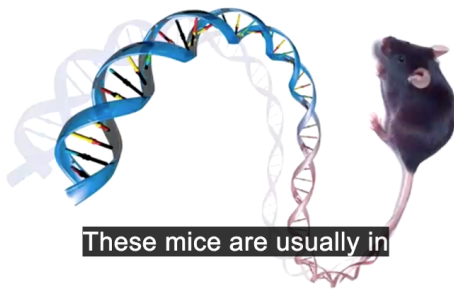


34 students in Professor Meei-Hua Lin's online Cell Biology course in Fall 2020 used Annote to post questions, comments, and responses about each other's short talks.



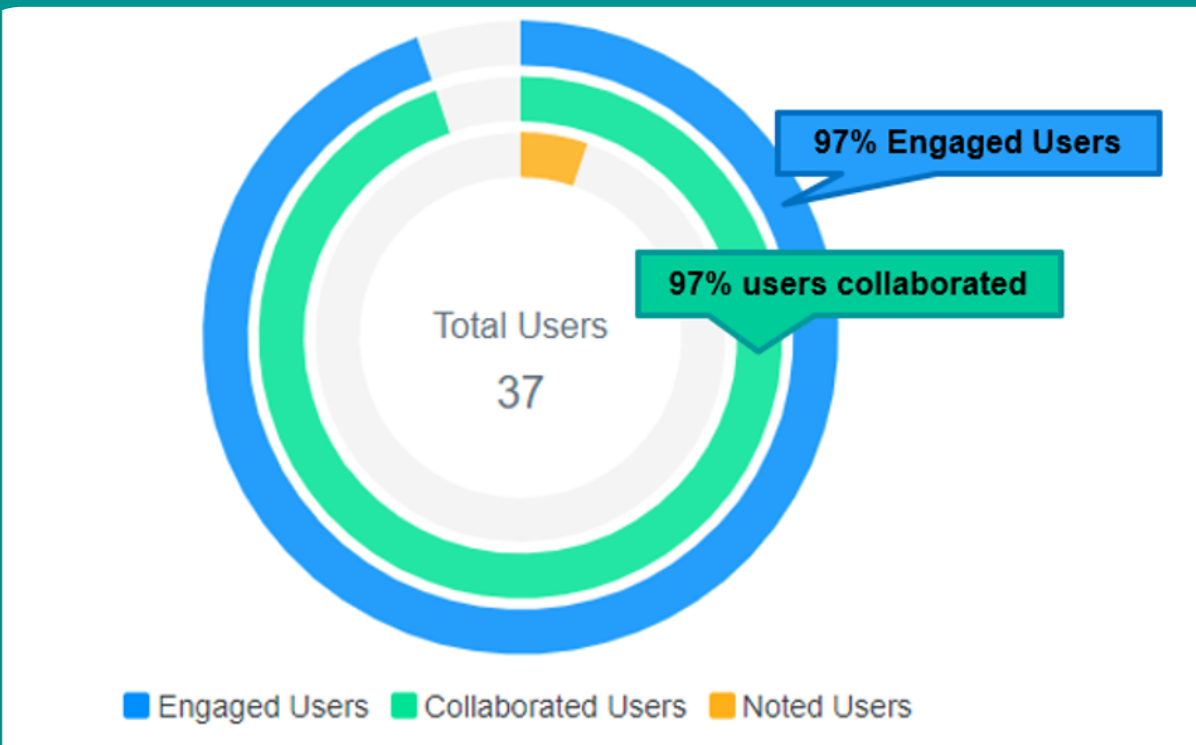
Can we knock-out mice with ES cells?

ES cells can be modified in the embryonic stem (ES) cells of early stage mice. This allows for transmission of genes through the germline so that offspring express the knocked-out gene.



Professor Lin decided to use the technology after shifting her course online during the pandemic.

Results?



- ➔ 97% of students engaged with Annote
- ➔ 97% of students collaborated via Annote
- ➔ 95% of students shared feedback with Annote